

Apr 25th, 6:00 PM - 7:00 PM

Advancing Natural History Research Using the Collections of the OWU Brant Museum of Zoology

Josh Pletcher
Ohio Wesleyan University

Kyle Davis
Ohio Wesleyan University

Follow this and additional works at: <https://digitalcommons.owu.edu/studentsymposium>

Part of the [History of Science, Technology, and Medicine Commons](#), and the [Zoology Commons](#)

Pletcher, Josh and Davis, Kyle, "Advancing Natural History Research Using the Collections of the OWU Brant Museum of Zoology" (2019). *Student Symposium*. 19.

https://digitalcommons.owu.edu/studentsymposium/2019/poster_session/19

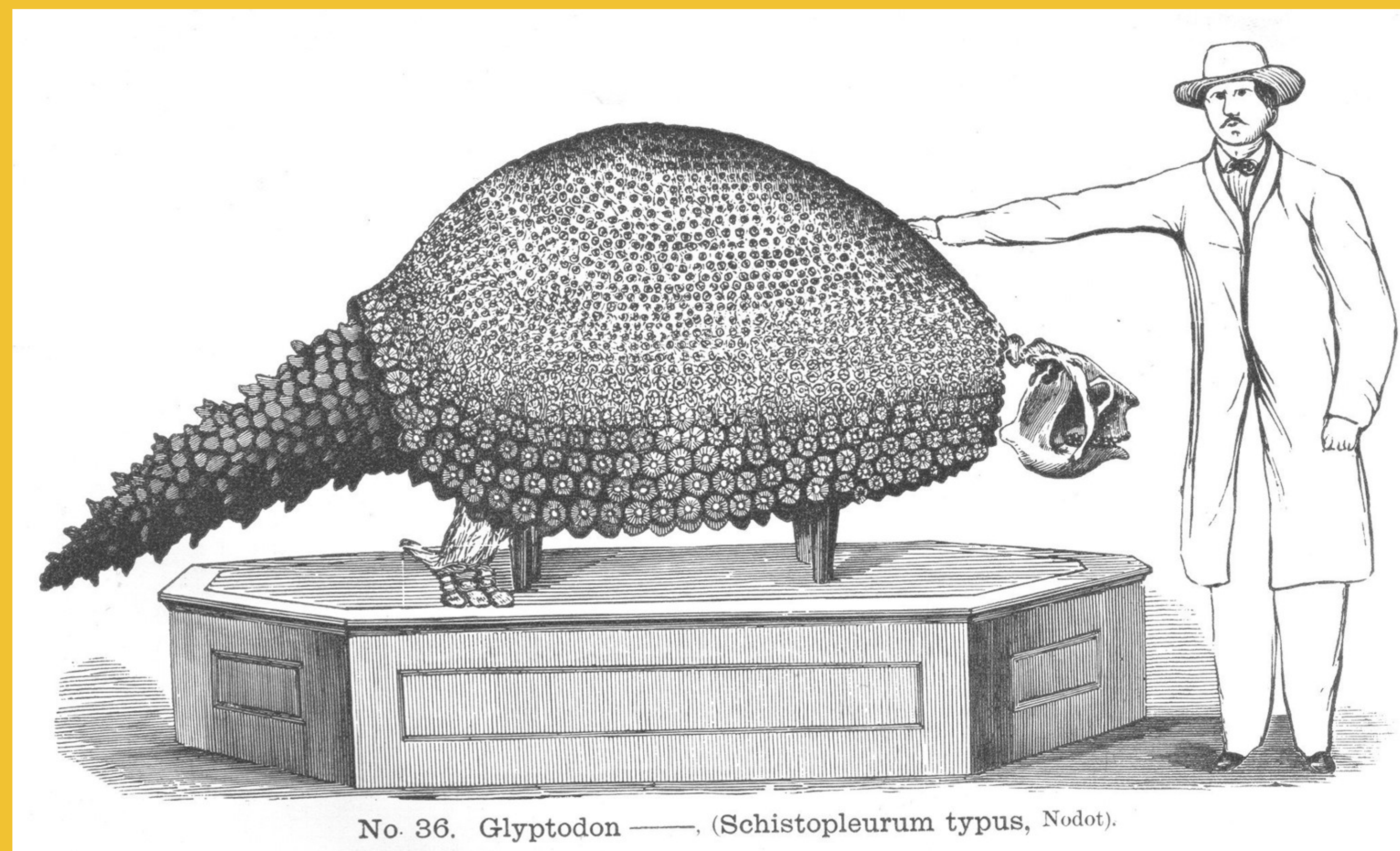
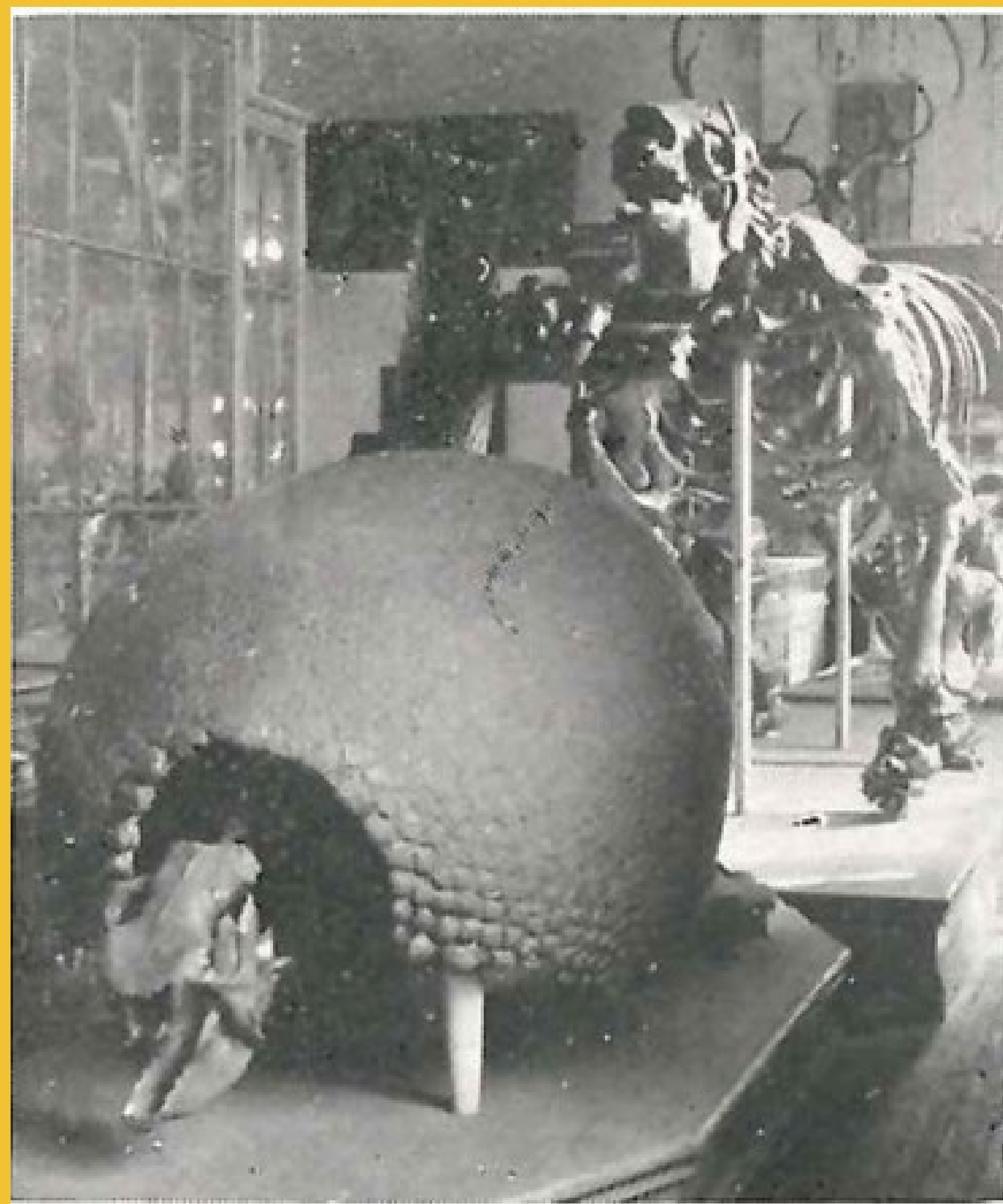
This Poster is brought to you for free and open access by the Student Scholarship at Digital Commons @ OWU. It has been accepted for inclusion in Student Symposium by an authorized administrator of Digital Commons @ OWU. For more information, please contact earutigl@owu.edu.

Advancing Natural History Research through the Collections of the OWU Brant Museum of Zoology

Digitization of OWU's Ward Fossil Casts

Josh Pletcher

Department of Zoology / Department of Geology & Geography



History

- 1869: OWU purchased large set of fossil casts from Henry A. Ward, founder of museum supply house Ward's Natural Science in Rochester, NY
- 1873–1962: Ward casts housed on third floor of Merrick Hall
- 1962: Museum collections moved to Bigelow-Rice Hall, some casts donated to OSU, others lost

Current Work

- Locating and consolidating casts
- Identifying and cataloguing casts on Arctos
- Photographing casts, funded by grant from Mellon Foundation
- Small Grant to visit Wesleyan University (currently restoring Ward's casts) and University of Rochester (home to Ward's archives)

Future Work

- Restoring casts
- Cataloguing casts sent to OSU
- Visiting Field Museum in Chicago to view Ward's original casts

Size Change In An Invasive Species

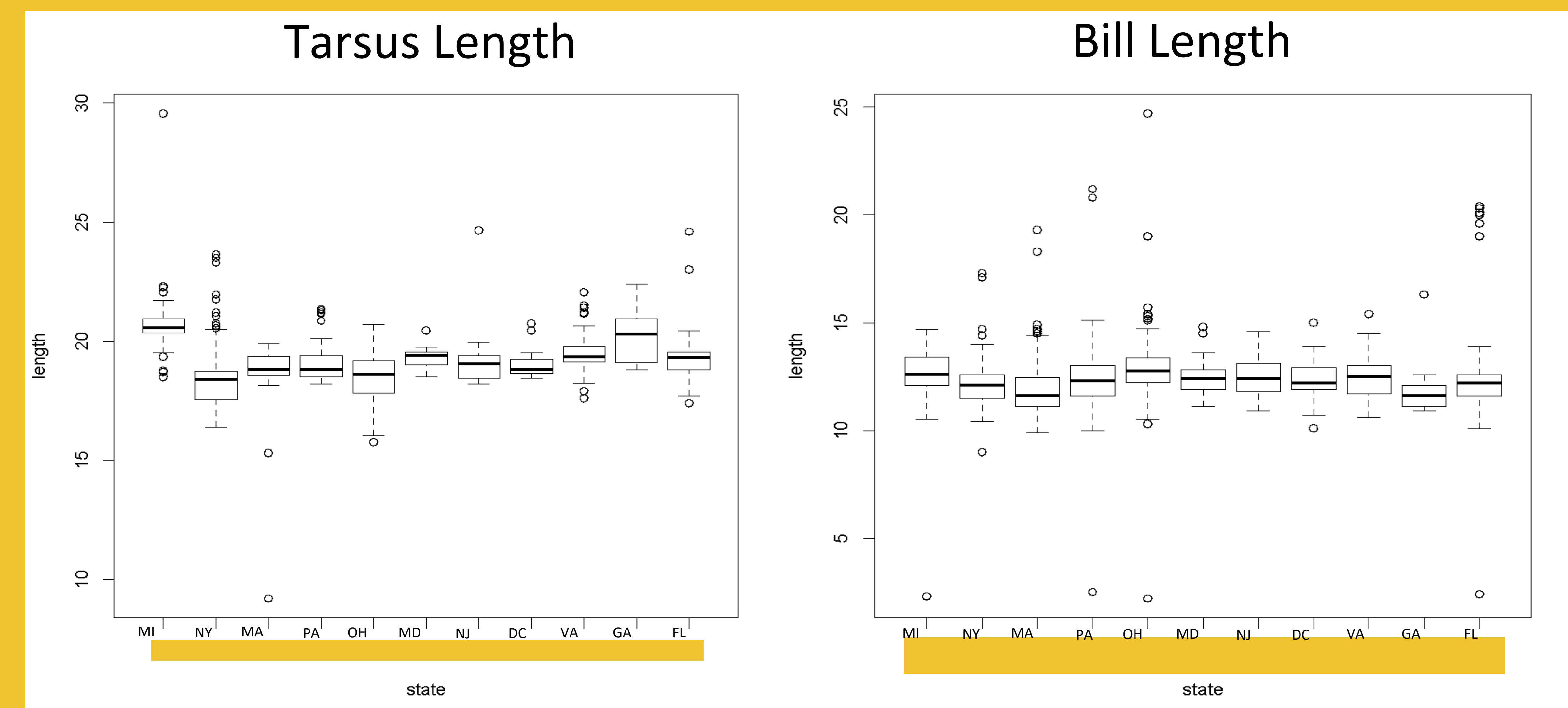
Kyle M. Davis

Department of Zoology / Department of Botany and Microbiology

Introduction

- Bergmann's rule suggests that birds are larger in colder climates than in warmer climates so as to conserve or dispel heat.
- measured the tarsus and bill length of 778 House sparrows

Results



Discussion

- As temperature decreases, size increases
- Change = conserving body heat
- More data = western and southern states
- analyze data from England