

Apr 18th, 5:35 PM - 5:50 PM

# The Score is Strong with this One: A Musical Analysis of the Star Wars Saga

Emily Phillips  
*Ohio Wesleyan University*

Follow this and additional works at: <https://digitalcommons.owu.edu/studentsymposium>



Part of the [Music Theory Commons](#)

---

Phillips, Emily, "The Score is Strong with this One: A Musical Analysis of the Star Wars Saga" (2017). *Student Symposium*. 2.  
[https://digitalcommons.owu.edu/studentsymposium/2017/panel\\_07/2](https://digitalcommons.owu.edu/studentsymposium/2017/panel_07/2)

This Presentation is brought to you for free and open access by the Student Scholarship at Digital Commons @ OWU. It has been accepted for inclusion in Student Symposium by an authorized administrator of Digital Commons @ OWU. For more information, please contact [earutigl@owu.edu](mailto:earutigl@owu.edu).

# The Score is Strong with This One

A Musical Analysis of the *Star Wars* Saga

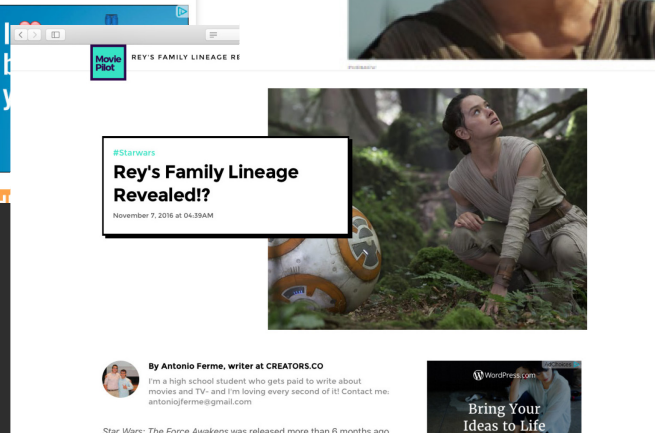
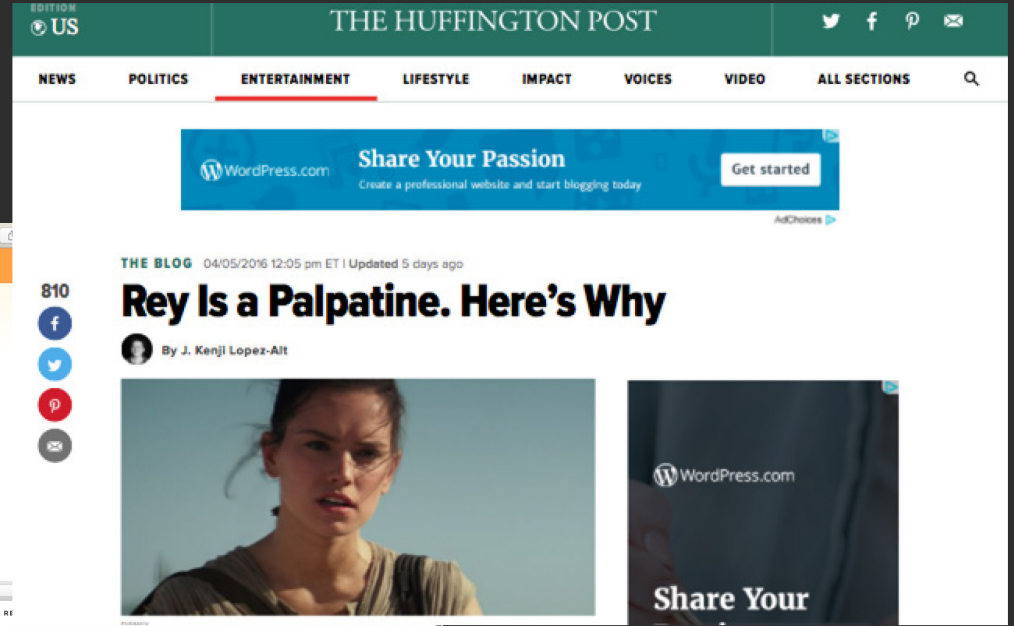
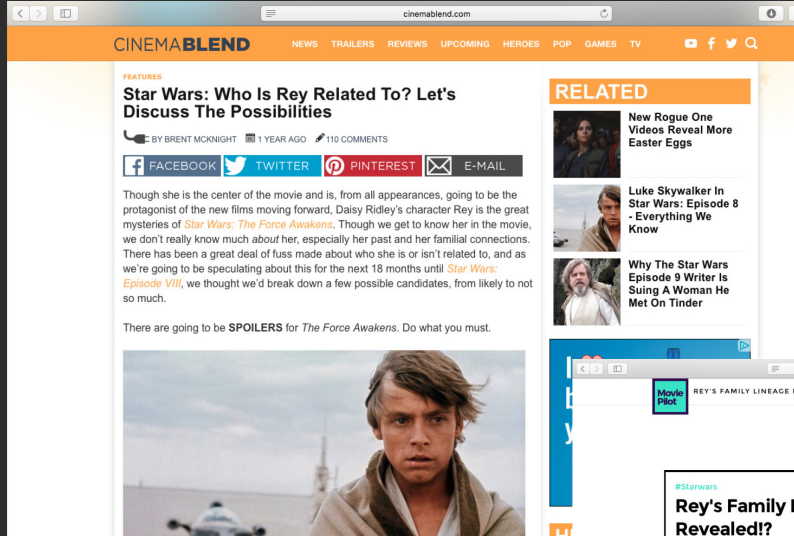
By: Emily Phillips



# December 2015



# Fan Theories





# Method of Analysis

Storylines, characters, themes, etc...

The score

Leitmotif

For example...



Through leitmotif, the score tells us certain things about certain characters.

# Destiny

An Unknown Motive





# Brother/Sister

A Family Reunited





# The Immolation Scene

A Failed Destiny

# The Chosen One





# The Scavenger

A New Face



# The Jedi Steps

Destiny Reborn



# Who is Rey?

Anakin's failure



New Chosen One is Needed





... To Be Continued



December 15, 2017

Thank you!

Questions?